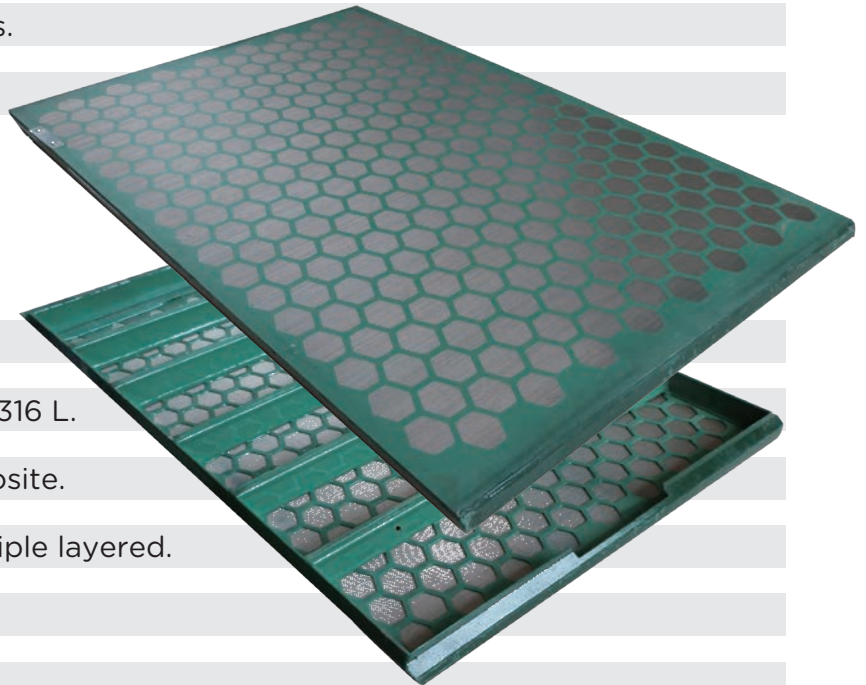




Brandt VSM 300 Primary Shaker Screen Replacement ▼

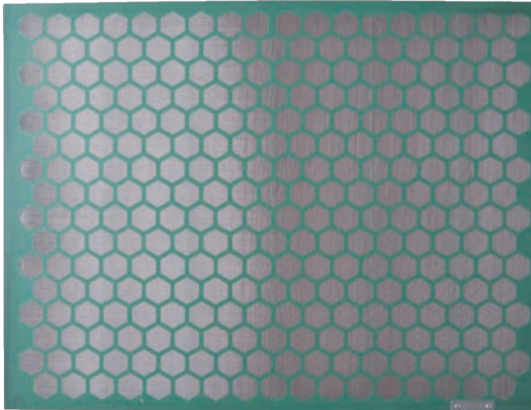
Compatible shale shakers

- Lower deck screen (4 screens) of Brandt VSM 300 shale shaker.
- Brandt VSM 300 vibrating screens.
- Brandt VSM 300 mud cleaner.



Technical Parameter

- **Model No.:** SJ-VSM 300P.
- **Material:** stainless steel 304/316/316 L.
- **Body Material:** Q235 steel/composite.
- **Screen Layered:** single, dual or triple layered.
- **Screen Angle:** 7°.
- **Standard:** API RP 13C.
- **API RP 13C Designation:** API 10 - API 325.
- **Series:** XR, XL optional.
- **Warranty Period:** 1 year.
- **Working Life:** 400-450 hours.



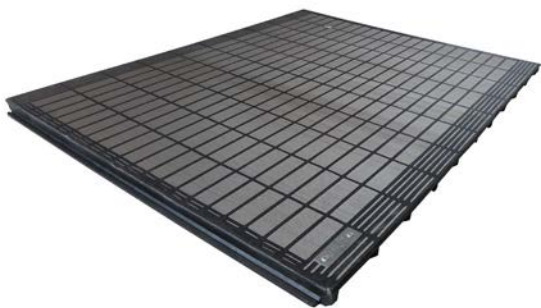
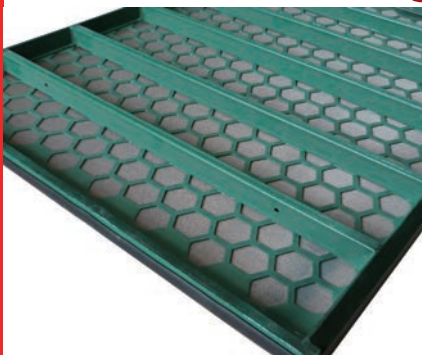
Steel Frame (Positive Side)

SS 304/316 Wire Mesh Cloth



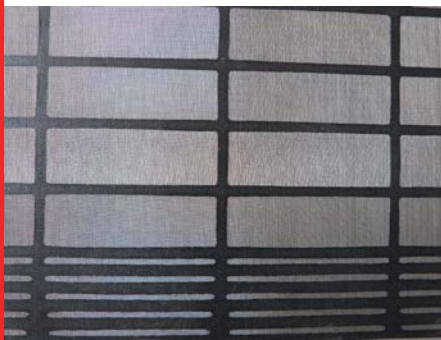
Steel Frame (Reverse Side)

Ribbed Back Supporting Frame



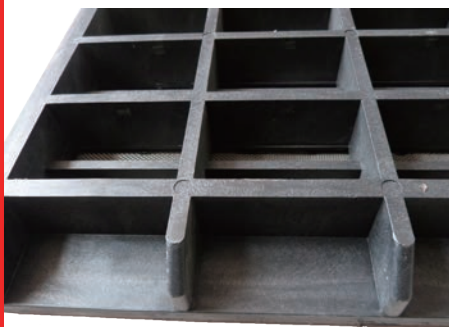
PT Frame (Positive Side)

SS 304/316 Wire Mesh Cloth



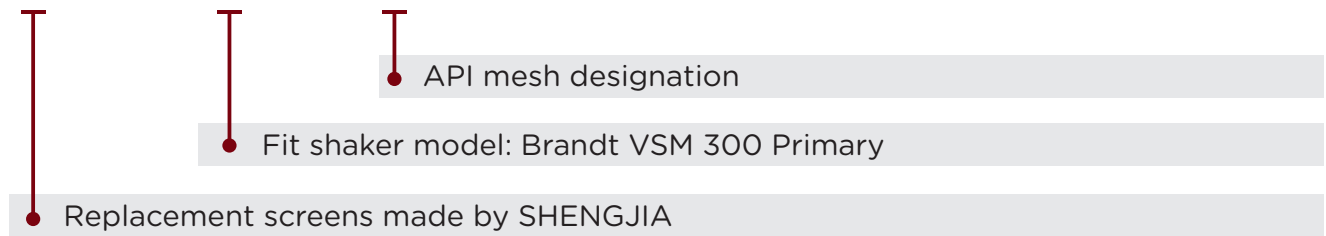
PT Frame (Reverse Side)

Composite Supporting Frame





SJ-VSM 300P-A325



Performance Parameter

| Screen Designation | Mesh Type | API RP 13C Designation | Conductance Number | D100 Separation (microns) | Layer No. | Non-Blank Area (sq.ft) |
|--------------------|-----------|------------------------|--------------------|---------------------------|-----------|------------------------|
| SJ-VSM 300P-A325 | XR | API 325 | 0.39 | 44 | 1/2/3 | 4.6 |
| SJ-VSM 300P-A270 | XR | API 270 | 0.67 | 57 | 1/2/3 | 4.6 |
| SJ-VSM 300P-A230 | XR | API 230 | 0.71 | 68 | 1/2/3 | 4.6 |
| SJ-VSM 300P-A200 | XR | API 200 | 1.32 | 73 | 1/2/3 | 4.6 |
| SJ-VSM 300P-A170 | XR | API 170 | 1.34 | 83 | 1/2/3 | 4.6 |
| SJ-VSM 300P-A140 | XR | API 140 | 1.89 | 101 | 1/2/3 | 4.6 |
| SJ-VSM 300P-A120 | XR | API 120 | 1.89 | 134 | 1/2/3 | 4.6 |
| SJ-VSM 300P-A100 | XR | API 100 | 2.66 | 164 | 1/2/3 | 4.6 |
| SJ-VSM 300P-A80 | XR | API 80 | 2.76 | 193 | 1/2/3 | 4.6 |
| SJ-VSM 300P-A70 | XR | API 70 | 3.33 | 203 | 1/2/3 | 4.6 |
| SJ-VSM 300P-A60 | XR | API 60 | 4.1 | 268 | 1/2/3 | 4.6 |
| SJ-VSM 300P-A50 | XR | API 50 | 5.17 | 285 | 1/2/3 | 4.6 |
| SJ-VSM 300P-A40 | XR | API 40 | 8.64 | 439 | 1/2/3 | 4.6 |
| SJ-VSM 300P-A35 | XR | API 35 | 9.69 | 538 | 1/2/3 | 4.6 |
| SJ-VSM 300P-A20 | XR | API 20 | 10.88 | 809 | 1/2/3 | 4.6 |

* D100: Particles this size and larger will normally be discarded.

* API: Corresponding API sieve equivalent as per API RP 13C.

* Conductance No.: This represents the ease with which a liquid can flow through the screen. Larger values represent higher volume handling.

DECLARATION

ShengJia solemnly declares that we only produce the replacement screens but not original ones.

■ Brandt, VSM 300, Primary are marks of Varco I/P, Inc.

* \All listed items are right fit replacement shaker screen not originally made by NOV Brandt.

* All concerned marks are reserved by the original manufacturer and company.